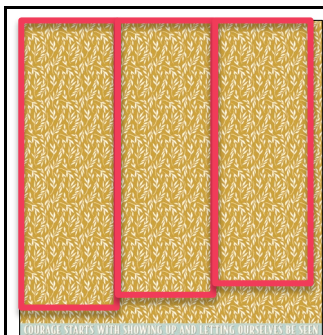




CUTTING LIST AND LAYOUT INSTRUCTIONS (All measurements supplied are width by height)
 Numbers in [red] indicate placement as noted in layout instructions.



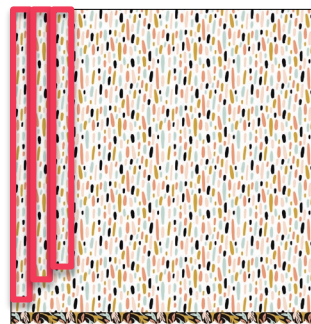
ADORED PD4000

- BARCODE STRIP: QUOTE [8]
- 10 X 29,5CM [4]
- 10 X 27,5CM [16]
- 10 X 25,5CM [11]



BLESSED PD4001

- TWO 4 X 23CM [9] [14]
- 4,5 X 23CM [19]
- THREE ROWS OF WORDS
- THREE 2,7 X 3CM



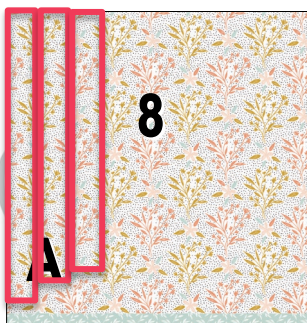
FABULOUS PD4003

- BARCODE: SCALLOP [7]
- 2 X 29,5CM [3]
- 2 X 27,5CM [15]
- 2 X 25,5CM [10]



FEARLESS PD34004 (TWO)

- TWO SHEETS JOINED FOR BACKGROUND [1] [2]



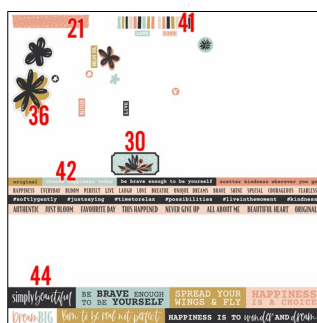
LOVED PD4005 (TWO)

- BARCODE: BLUE LEAVES
 - 29,5 X 0,8CM [5]
 - 27,5 X 0,5CM [17]
 - 25,5 X 0,7CM [12]
- 2 X 29,5CM [5]
- 2 X 27,5CM []
- 2 X 25,5CM [11]



STRONG PD4006

- FUSSY CUT ELEMENTS AS INDICATED



UNIQUE PD4007

- FUSSY CUT ELEMENTS AS INDICATED

CHIPBOARD EMBELLISHMENTS REQUIRED

PD4010 WORD SENTIMENTS | PD4011 MODISTA BOTANICALS | PD4013 YOU-NIQUE FRAMES AND ARROWS | PD4013 UNIQUE TILES

PHOTO REQUIREMENTS: THREE 13 x 20CM (PORTRAIT)

LAYOUT PRODUCT AND TOOL REQUIREMENTS

NON-STICK CRAFT SHEET | CIRCLE PUNCH: 3/8", 1/2", 5/8", 7/8", 1", 1 1/2" | INK BLENDING TOOL WITH FOAM
DISTRESS PAINT: SPECKLED EGG | POP DOTS OR FOAM SQUARES/STRIPS

CHIPBOARD EMBELLISHMENTS

PD4013 ENGRAVED CHIPBOARD YOU-NIQUE FRAMES

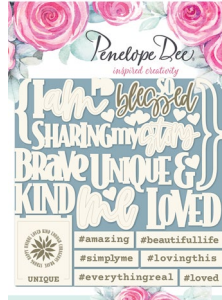


PHOTO FRAMES

Cut apart and adhere corresponding **STRONG** frames to chipboard frames
MEMORABLE: gold leaf frame
DREAM BIG: black text frame
HAPPINESS: stripe frame
AUTHENTIC: DREAM BIG yellow frame
CAPTURED: CAPTURED coral frame
BE YOU CIRCLE

Apply *Speckled Egg Distress Paint* with an ink blending tool and foam to chipboard, including the engraved sections. Set aside to dry.

PD4010 ENGRAVED CHIPBOARD WORD SENTIMENTS



UNIQUE, LOVED and SMALL BRACKET

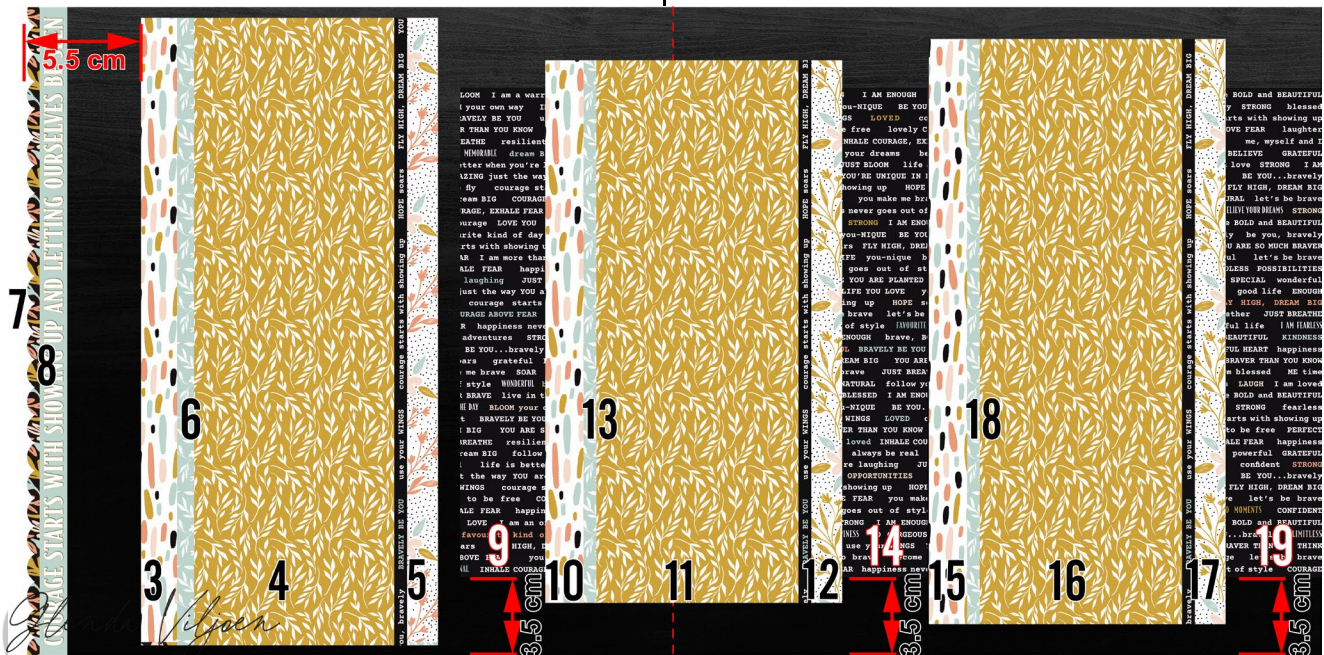
Apply *Speckled Egg Distress Paint* with an ink blending tool and foam to chipboard. Set aside to dry.

#simplyme #amazing #loved
#beautifullife

Apply *Speckled Egg Distress Paint* with an ink blending tool and foam to chipboard, including the engraved sections. While paint is still wet, wipe

with damp wet wipe to remove some paint from the chipboard, taking care not to remove paint from engraved sections.

LAYOUT INSTRUCTIONS



- To create background, adhere two sheets of black woodgrain **FEARLESS** [1] and [2] flush with each other, aligning top edges.
- Join **FABULOUS** [3], **ADORED** [4] and **LOVED** [5] edges flush, aligning top edges. Adhere blue leaf barcode [6] over dash **FABULOUS** and gold **ADORED** join. Adhere **BLESSED** word strip, trimmed to 29,5cm over gold leaf and speckled **LOVED** join. Adhere joined paper pieces to layout 5,5cm from left and 0,5cm from bottom edges.
- Adhere scallop **FABULOUS** barcode [7] on left edge aligning top and left edges. Adhere **ADORED** barcode [8]

- with quote 0,8cm from left edge, aligning top with scallop top edge.
- Adhere **BLESSED** [9] 20,7cm from left and 3,5cm from bottom edges.
- Join **FABULOUS** [10], **ADORED** [11] and **LOVED** [12] edges flush, aligning top edges. Adhere blue leaf barcode [13] over dash **FABULOUS** and gold **ADORED** join. Adhere **BLESSED** word strip, trimmed to 25,5cm over gold leaf and speckled **LOVED** join. Adhere joined paper pieces to layout with left edge flush with right edge of black **BLESSED** text and 2,3cm from bottom edges.

- Adhere **BLESSED** [14] with left edge flush with right edge of joined paper pieces and 3,5cm from bottom edge.
- Join **FABULOUS** [15], **ADORED** [16] and **LOVED** [17] edges flush, aligning top edges. Adhere blue leaf barcode [18] over dash **FABULOUS** and gold **ADORED** join. Adhere **BLESSED** word strip, trimmed to 27,5cm over gold leaf and speckled **LOVED** join. Adhere joined paper pieces to layout with left edge flush with right edge of black **BLESSED** text and 2,3cm from bottom edges.
- Adhere **BLESSED** [19] with left edge flush with right edge of joined paper pieces and 3,5cm from bottom edge.
- Adhere three 13 x 20cm photos:
 - **PHOTO ONE:**
9,5cm from left and 5,5cm from bottom edges.
 - **PHOTO TWO:**
30,5cm from left (right of background paper join) and 5,5cm from bottom edges.
 - **PHOTO THREE:**
2,5cm from right and 5,5cm from bottom edges.

PHOTO ONE EMBELLISHMENT CLUSTER

□ TOP



- Adhere two black chipboard botanicals (trim stems flush with top of photo) 11cm from left edge.
- Adhere fussy cut blue **STRONG** botanical cluster [20] to right of black chipboard botanicals, tucking under photo (or trim). Cut a 1cm piece of coral **UNIQUE** tape [21] and tuck under right side of botanical.
- Adhere 'LIVING OUT LOUD' tab [22] to top right photo edge. Adhere 5/8" blue button to tab.
- Adhere painted chipboard 'LOVED' 12cm from left and 2,5cm from top edges.

□ LEFT TOP



Glenda Viljoen

- Adhere large fussy cut floral [23] 3,5cm from left and 7cm from top edges, tucking fussy cut black leaves [24] [25] under bottom right edge.
 - Adhere fussy cut coral floral [26] above large floral. Adhere 1/2" punched 'ME' circle [27] on top of leaves, left of photo.
 - Adhere coral floral [28] 2,5cm from left and 13,5cm from bottom edges. Adhere 1/2" punched blue circle to floral bottom edge.
 - Adhere chipboard **UNIQUE** frame 3,2cm from left and 10cm from top edges.
- **LEFT BOTTOM:**



- Adhere **STRONG** embellishment cluster [29] 4cm from left and 5,5cm from bottom edges. Adhere chipboard **CAPTURED** frame 6,8cm from left and 6cm from bottom edges. Adhere 'LIVE' and 'LIFE' from **UNIQUE** staggered below frame.
 - Adhere acrylic flower 3cm from left and 4cm from bottom edges. Adhere 1/2" punched blue button to right of flower and a small punched coral circle to left of button.
- **BOTTOM**
- Adhere two black chipboard botanical leaves, trimming excess stems to fit below photo. Adhere fussy cut blue **UNIQUE** ticket [30] 11,5cm from left and 3,3cm from bottom edges.

UNIQUE EMBELLISHMENT FRAME CLUSTER



- Adhere black text chipboard frame 25cm from left and 6,3cm from bottom edges. Adhere 1" **BEAUTIFUL** circle

[31] to bottom left frame edge. Adhere chipboard #loved to frame bottom edge.

- Adhere small black flower below #loved and ½" punched light coral button to left of flower. Adhere acrylic flower to right of button and small flower. Adhere 'DREAM BIG' below flower on FABULOUS strip.
- Adhere small floral [32] 24cm from left and 12,5cm from bottom edges. Adhere golden leaf frame [33] 20,3cm from left and 7,5cm from bottom edges. Adhere large floral [34] 22cm from left and 8,5cm from bottom edges, on top of frame. Adhere chipboard '#amazing' sentiment centered on bottom section of golden frame. Adhere blue BLESSED frame [35] 25cm from left and 10cm from bottom edges.
- Adhere chipboard #simplyme sentiment on top of small floral, top right.
- Adhere chipboard stripe frame 23cm from left and 7,5cm from top edges. Adhere painted chipboard 'UNIQUE' sentiment to bottom right of frame, overlapping on bottom and right edges. Adhere left edge of golden floral [36] onto stripe frame 22,5cm from left and 8cm from top edges. Adhere black chipboard botanical to top right side of frame, extending onto blue strip. Adhere chipboard DREAM BIG frame onto stripe frame 25cm from left and 6,5cm from top edges. Adhere light blue flower [43] to top left edge of frame. Adhere chipboard flower below bottom right corner of DREAM BIG frame.



PHOTO TWO EMBELLISHMENT

Adhere fussy cut BRAVE embellishment [37] 23 cm from right and 3,5cm from bottom edges. *OPTIONAL*: adhere 1½" punched LOVE circle [38] on top of BRAVE circle.

PHOTO THREE EMBELLISHMENT CLUSTERS

TOP

- Adhere medium floral [40] 6,5cm from right and 2cm from top edges, tucking bottom edge under photo.
- Adhere 4,5cm tape [41] 9,5cm from right and 3cm from top edges.
- Adhere 'simply BEAUTIFUL' sentiment [44] along top edge of photo, 1cm from left edge.

BOTTOM

- Adhere painted small chipboard bracket 1,3cm from right and 3,8cm from bottom edges (right of photo).
- Adhere 'choose happiness today' sentiment [42] below photo. Adhere #beautifulife chipboard sentiment and fussy cut 'original' (or other suitable word) from BLESSED sheet below 'choose happiness' sentiment.
- Adhere painted chipboard 'BE you' circle 11cm from right and 2,3cm from bottom edges. Adhere ½" and ¼" punched blue buttons to right of chipboard circle.

- Complete layout with additional embellishment and sentiments as desired.

Penelope Dee®